



GEORGE  
WATSON'S  
— COLLEGE —

# Literacy

## Topics

*Click on the title to skip to that page*

Green Pen Introduction	2
S1 Green Pen Resource: Punctuation	3
S1 Green Pen Answers	4

# GREEN FOR GO!



**CHECK YOUR WORK**



**CORRECT MISTAKES**

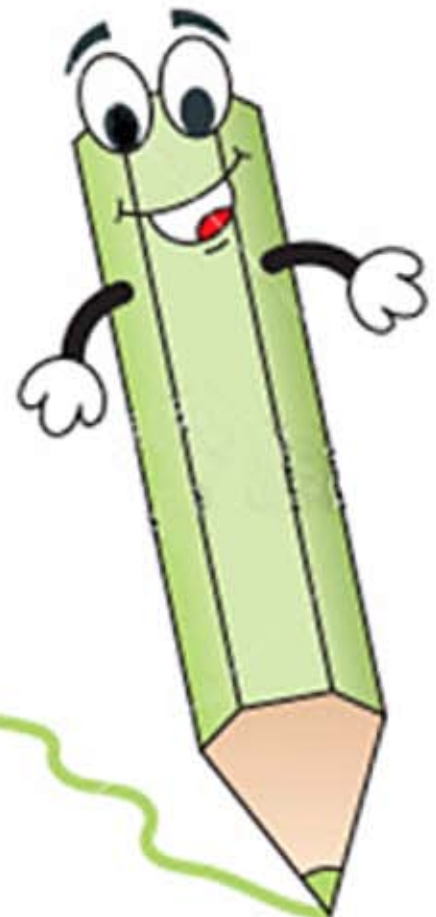


**GET IT TO YOUR TEACHER!**

When you are due to submit a piece of work for formal assessment, it is important that you proof-read it before handing it in. Literacy is an important skill that will help you throughout your life. You should aim to become more independent in your efforts to develop your own skills in literacy; this will help you in all of your subjects and will ensure you reach your full potential. Self-correction is an important step in this process so...

Check, correct, commit your work!

**EASY!**



## S1 Green Pen Resource

The passage below is taken from A. Rutgers van der Loerff's 'Children on the Oregon Trail', based on the true story of John Sager, a thirteen year old boy who - after his parents died of dysentery - single-handedly led his brothers and sisters on through perilous country to their new home in Oregon in the United States of America in 1844.

Please use your green pen to correct the passage, from which all the following have been removed:

- full stops, to be used at the end of every sentence
- capital letters, to be used at the start of a new sentence and for all proper nouns
- commas, used to punctuate a list of words; to signal a short pause in a sentence; and/or to insert a short clause into a sentence
- semi-colons, which can also be used to connect two linked clauses, which could stand as sentences in their own right

### Passage:

somewhat higher up the valley lay fort laramie

it was an oblong low building with a palisade of wooden posts on top of the stone walls those outer walls formed the rear side of all the rooms in the fort which opened onto the inner courtyard the courtyard was square its floor was of stamped earth and almost wide in the scorching noonday sun to reach it you had to go through a gate in a massive square tower pierced with openings for guns

it was a good strong fort in which the factor and his sixteen men could feel safe besides they often gave hospitality to soldiers of government expeditions in transit and that was the case now fort laramie in the wilderness six hundred and sixty-seven miles from the last outpost of the inhabited world was the principal trading-point in the route to oregon and california

on this blazing afternoon in june 1844 not a man was to be seen in the courtyard

# S1 Green Pen Resource Answers

Somewhat higher up the valley lay Fort Laramie.

It was an oblong, low building, with a palisade of wooden posts on top of the stone walls. Those outer walls formed the rear side of all the rooms in the fort, which opened onto the inner courtyard. The courtyard was square. Its floor was of stamped earth and almost wide in the scorching noonday sun. To reach it, you had to go through a gate in a massive, square tower, pierced with openings for guns.

It was a good, strong fort, in which the factor and his sixteen men could feel safe. Besides, they often gave hospitality to soldiers of government expeditions in transit, and that was the case now. Fort Laramie, in the wilderness, six hundred and sixty-seven miles from the last outpost of the inhabited world, was the principal trading-point in the route to Oregon and California.

On this blazing afternoon, in June 1844, not a man was to be seen in the courtyard.